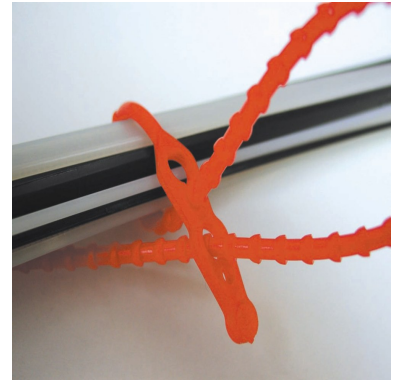


Universal ties

Releasible ties

Reference : LDAU



Single Use : No

Material : Polyéthylène type Lupolen 1800H

Total length : De 120 à 700 mm

Metal insert : No

Closure type : Progressive tightening

Type of tail : Round and incremented

Ex stock : Yes

Standard packaging : 1.000 pcs box

MOQ for stock product : 1.000 pcs

HS Code : 39 23 50 90

Food compatible : Oui en coloris Naturel

Detectable : En option

Possible Marking : No

Delivery Deadline : 24 à 72h

Available colors :



These polyethylen ties can be used several times, up to 700 mm long

They are mainly used in domains such as pharmaceuticals, hospitals, car-industry, food-industry ...

Several lengths are available :

| Dimensions | Tensile strength |
|--------------|------------------|
| 120 x 3,5 mm | 130 N |
| 180 x 3,5 mm | 150 N |
| 240 x 3,9 mm | 180 N |
| 320 x 4,4 mm | 230 N |
| 500 x 5,7 mm | 250 N |
| 700 x 6,6 mm | 370 N |

Frosted ties are conform with norm EU10/2011, regarding food compatibility

Free samples on request



2 Avenue Paul Langevin - Zone d'Activités de Ravennes les Francs - 59200 - TOURCOING - France
Phone : +33 3 20 28 87 31 - Fax : +33 3 20 28 87 36
www.etigo.fr - Email : info@etigo.fr

