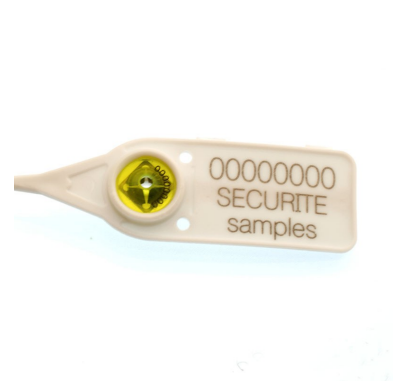


SCELLE FLE 220 / 380

Catalog



Main application fields : Unauthorized access and fraud to containers, cars, capacities, accommodations, bags, safe deposits, cases, gas stations, luggage etc...

Single Use : Yes

Material : Polypropylen (PP)

Diameter / Strap width : 2,4 mm

Total length : 260 / 440

Usable length : 220 / 380

Colours available on stock : Yellow, green, white, blue, red.

Metal insert : Yes

Closure type : Progressive tightening

Tear off : No

Type of tail : Round & smooth

Tag dimensions : 41,5x20,8x7 mm / 41,5x20,8x8,8 mm

Ex stock : Yes

Standard packaging : 100 pcs bags

Delivery time for personalised product : 2/3 weeks

MOQ for stock product : 100 pcs

MOQ personalised products : 1000 pcs

Weight for 1000 pcs : 3.4 kg

HS Code : 39 23 50 90

Food compatible : No

Detectable : No

Possible Marking : Yes

Use temperature : -60°C -> +80°C

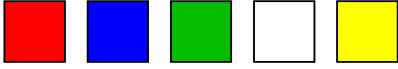
ETIGO

2 Avenue Paul Langevin - Zone d'Activités de Ravennes les Francs - 59200 - TOURCOING - France
Phone : +33 3 20 28 87 31 - Fax : +33 3 20 28 87 36
www.etigo.fr - Email : info@etigo.fr

SCELLE FLE 220 / 380

Catalog

Available colors :



Pull-tight seal, the highest level of protection, new improved collet design.

Transparent cap allows to control integrity of the collet when locked.

Double numbering, on the collet and on the bracket.

Two holes on the bracket allow to create two buckles to fix a label for example, and to reduce the length of the remaining stalk.

Other colors on request - but it should be light to read the bar-code clearly.

